
What's New in QuickMail Pro 2.0.4

QUICKMAIL PRO CHANGES

QuickMail Pro offers new features and interface improvements that are discussed in this document. Use this document as a supplement to the *QuickMail Pro User Guide for Macintosh*.

ICONS

- The Servers button in the Contacts Manager is now called the Directory button.
- A green dot over an address book icon indicates that it is a remote address book. In other words, QuickMail Pro is reading the address book from the directory server.



Figure 1: The remote address book icon has a green dot over the address book icon

- New icons enable you to distinguish messages you have replied to and forwarded.

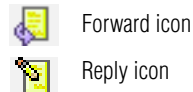


Figure 2: The icons that display in your Inbox when you have forwarded or replied to messages.

MAIL FILTERS

Shortcut keys now display in the Message Browser's filter menu when the filter bar is displayed. Press the shortcut keys to filter mail in all of your folders that display a mail list. For example, press Shift+F to display all your unflagged messages.

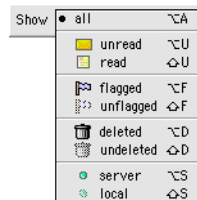


Figure 3: The Message Browser's filter menu

VCARDS

The vCards that you have created in the Personal vCards preferences panel display when you click the attachment icon in a Message window. Multiple vCards can now be made available for a single account.



Figure 4: Select a vCard from the attachment drop-down list

PREFERENCES

New options have been added to the Account, Behavior, Return Receipt, and Reading preference panels.

CLOSING THE MESSAGE WINDOW

There is a new setting in the Behavior preference panel that enables you to automatically close the original Message window after forwarding or replying to a message.

SHOWING WARNINGS

There is a new setting in the Behavior preference panel that enables you to choose whether or not you want a warning dialog to display when you file server messages or delete messages or contacts.

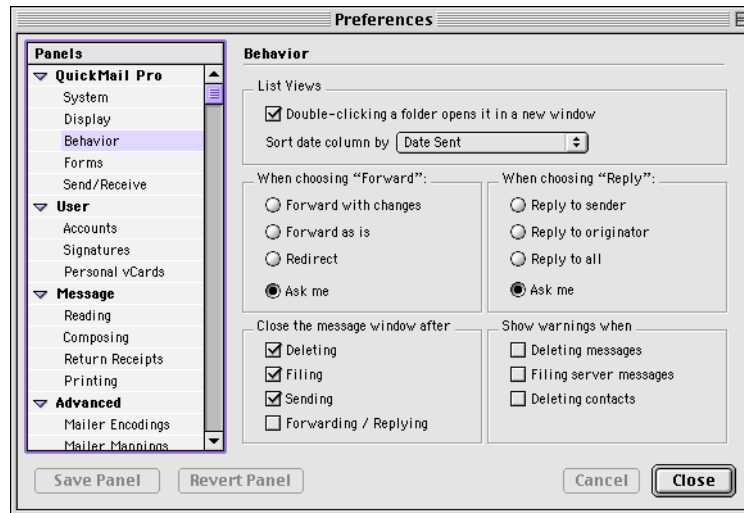


Figure 5: The Behavior preference panel

RETRIEVING ACCOUNT INFORMATION FROM THE SERVER

The Fetch Server Aliases button has been changed to Get From Server. Click this button when you want to retrieve personas for the selected account from the mail server.

DELETING INBOX MAIL

Select Delete mail after X days to automate the process of deleting your mail. Specify how old your mail must be before QuickMail Pro deletes it. Select the Read mail only check box if you only want to delete mail that is marked as read. For example, you can choose to delete all read mail that has been in your Inbox more than 30 days.

DELETING SENT MAIL

Copies of all the messages you send are stored in the Sent Items folder. You can automate the process of deleting mail from this folder by selecting the Delete sent mail after X days check box and specifying how old your mail must be before QuickMail Pro deletes it.

The screenshot shows the 'Edit Account' dialog box with the following details:

- Account Name:** Home
- Include with "Send & Receive All"
- Personas:**
 - Persona: Main Persona
 - First Name: John
 - Last Name: Smith
 - E-mail Address: js@cmeplay.com
- Incoming Mail:**
 - POP Account: cme
 - POP Host: cme.com
 - POP Password:
 - Check mail every 15 minutes
 - Leave Mail On Server
 - Delete mail after 30 days
 - Secure Password (APOP)
 - Read mail only
- Outgoing Mail:**
 - SMTP Host: cme.com
 - Delete sent mail after 30 days

Figure 6: The Edit Account dialog

MARKING MESSAGE PEEK MESSAGES

The Message Peek feature enables you to display the contents of a selected message in the Message Peek pane of the Message Browser. If you have a particular message displayed in the Message Peek pane for an extended amount of time, you can now set your preferences to mark that message as “read.”

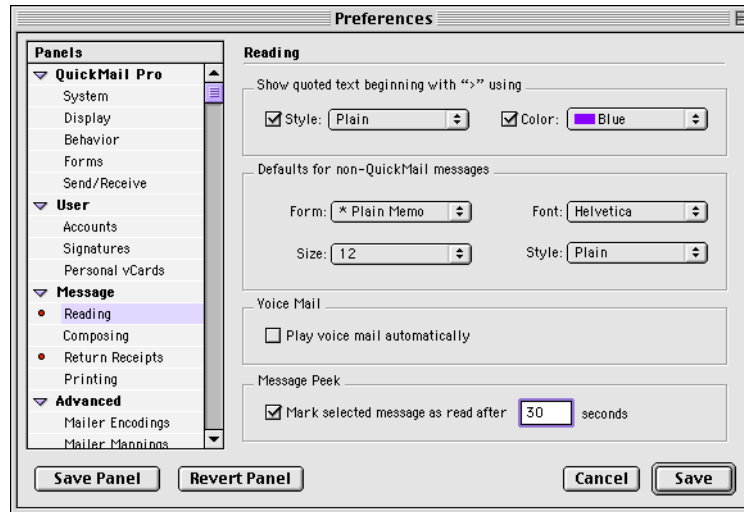


Figure 7: The Reading preferences panel

DELETING RETURN RECEIPTS

When you choose to receive return receipts, you may find that your Receipts folder fills up quickly. To automatically delete receipts, set the expiration option in the Return Receipts preference panel. For example, you can choose to delete all return receipts that are older than seven days.

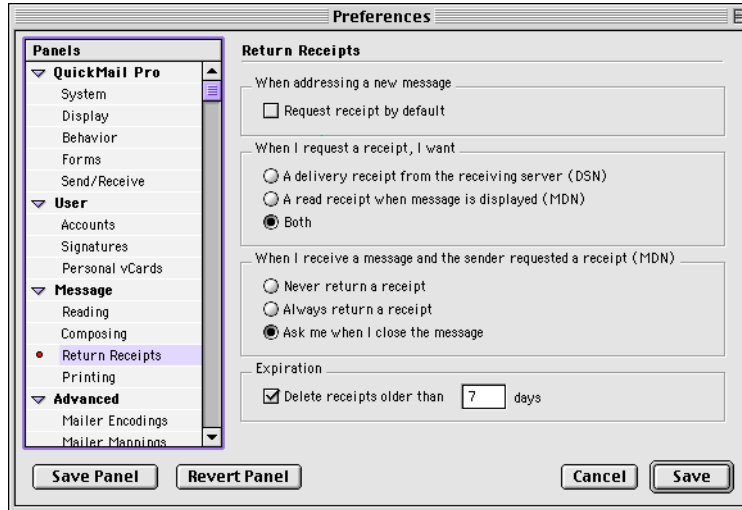


Figure 8: The Return Receipts preferences panel

REBUILDING INDEX FILES

When you select a folder in the Message Browser and select Get Info from the File menu, the dialog shown in Figure 9 appears. Use the Folder Info dialog to edit the folder name and icon, or to rebuild the folder's index files. Index files keep track of which files go in particular folders. If you notice that some messages don't appear or that folders aren't nesting properly, rebuild the index file to fix the problem.

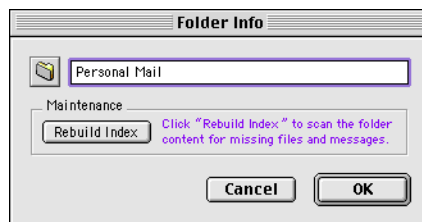


Figure 9: The Folder Info dialog

CHANGING MESSAGE RECIPIENTS

There is now the ability to change message recipients for messages in your Inbox and personal mail folders. When you open a message you have received, edit the recipients in the Show Address dialog, and click OK, the dialog shown in Figure 10 appears. Click Yes to proceed with the changes you are making to the message.



Figure 10: The Make Message Sendable dialog

Once you have chosen to make the message sendable, the properties of the Message window change. The Forward and Reply buttons change to Spell and Send buttons, respectively, and the Save button becomes enabled. These changes enable you to handle the message as if the message were just created.

IMPORTING CONTACTS

The “Idif” format is a standard contacts manager format that QuickMail Pro recognizes. When you open unread messages in your Inbox that contain “.ldif” or “.ldf” attachments, a dialog now displays asking if you want to import the contacts into your Contacts Manager. If you click Yes, the contacts display in your Contacts Manager in a separate address book. If you click No, the message simply appears in your Inbox with an attachment you can retrieve at a later time.



Figure 11: This prompt appears when you open messages containing .ldif or .ldf files

