



Spamcaster™

Version 1.0.4

Manual

Last Updated 12/27/2005

Outspring, Incorporated

<http://www.outspring.com>

Table of Contents

INTRODUCTION

- [Welcome to Spamcaster](#)
- [What can Spamcaster do for you?](#)
- [What is Spamcaster?](#)
- [Features](#)
- [How does Spamcaster work?](#)

USAGE

- [How to launch and stop Spamcaster](#)
- [Menu commands](#)
- [Spamcaster Preferences Window](#)
- [Filter Using These Rules](#)

[Default Action for Junk Mail](#)
[Spamcaster Log File](#)
[Spamcaster Main Window](#)
[Spamcaster Rule Lists](#)
[Outspring Rule Lists](#)
[User Rule Lists](#)
[Creating Rule Lists](#)
[Rule List Syntax](#)
[URLs](#)
[Strings](#)
[IP Numbers and IP Ranges](#)
[Parts and Attachments](#)
[Words of Warning](#)

TECH SUPPORT
[How to contact Outspring](#)

INTRODUCTION

Welcome to Spamcaster 1.0.4

Welcome to the wonderful world of [Spamcaster](#)!



For the most up-to-date version of this manual, see <http://help.outspring.com>.

What can Spamcaster do for you?

These days every email user, young or old, at home or at work, has to deal with unwanted junk mail one way or another. We endlessly search for ways to eliminate it from our day and remove it's time wasting stain from the fabric of our lives. Although there may be no silver bullet to kill the junk mail beast once and for all, Outspring hopes to bring some relief to the front line of your war on spam with a small, but powerful new addition to QuickMail Server, Spamcaster!

What is Spamcaster?

Spamcaster is a new email filtering application available for use with the QuickMail Server. If you're familiar with the junk mail script previously supplied with QuickMail Server then the functionality Spamcaster provides will not be wholly new to you. However, there is an all new power and enhanced capability available to you through the features provided by Outspring's latest, server side, email filtering tool.

Features

* Rule based filtering of:

- IP addresses
- Domains
- Web addresses
- Email addresses
- Text strings
- Combinations of words and phrases
- Attachments

* Subscription based service to provide a strong core of filtering rules

* Spamcaster is a separate application that automatically works directly in conjunction with QuickMail Server

* The fact that Spamcaster is a separate application also makes it easy to update without requiring installation of a whole new server package

* User lists are flexible and easily customizable

* User lists can easily be exchanged and used on other servers running Spamcaster

* Spamcaster gives you multiple options when it encounters mail that's been classified as spam

* Full email scanning, headers and body (including attachments)

How does Spamcaster Work?

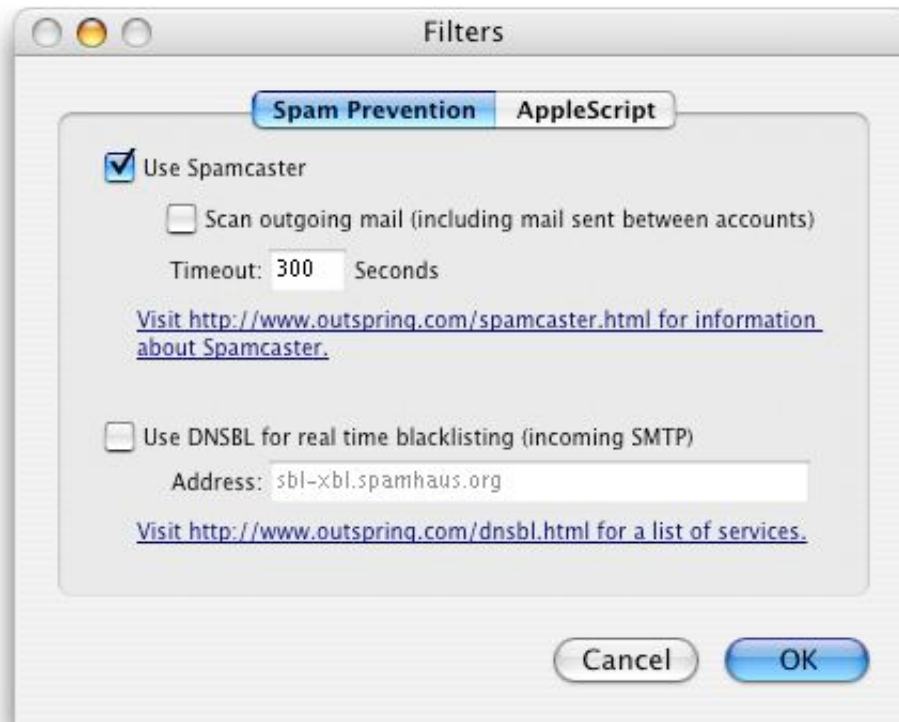
Spamcaster works in conjunction with the QuickMail Server to filter incoming email messages based on a set of conditions. These conditions are actually simple rules which Spamcaster uses to determine whether or not a message should be allowed to continue on to its intended recipient. The simple rules used by Spamcaster come from rule lists of which there are two types: *Outspring Lists* and *User Lists*. When QuickMail Server receives a message, before it is delivered to the proper mailbox, it is first scanned by Spamcaster.

Once Spamcaster receives a message from QuickMail Server, it then begins scanning it using the rules provided in either the *Outspring List*, the *User List(s)*, or a combination of both. Spamcaster will search for matches within the email for all given rules, based on the current configuration. If a match is found, Spamcaster will then take the appropriate action which is configurable by the user.

USAGE

How to Launch and Stop Spamcaster

Spamcaster is both launched and stopped appropriately by the QuickMail Server. First, enable Spamcaster by checking the **Use Spamcaster** checkbox within QuickMail Server's settings. This may be found by choosing the **Filters...** item under the **Configure** menu heading, and then selecting the **Spam Prevention** tab.



Filters Dialog


Once you have enabled Spamcaster, QuickMail Server will launch and control Spamcaster, whenever the server itself is loaded or stopped.

Although it is possible to manually stop Spamcaster, the QuickMail Server will automatically restart Spamcaster unless filtering has been disabled within the QuickMail Server's settings. An added benefit of this behavior is that in the event Spamcaster shuts down unexpectedly, QuickMail Server will automatically restart it, preventing messages from backing up on your server. This is useful given the chance a problem occurs at night or some other time when no one is available to observe the situation.

Menu Commands

When Spamcaster is selected as the active application its menu bar becomes available at the top of your display's screen. Located under the **Spamcaster** menu you will find these commands:

1) **Preferences** - open the preferences window ( - P)

2) **Reload Rules** - reload all rule lists ( - R)

Spamcaster Preferences Window

All Spamcaster functions (apart from filtering using rule sets) are configured via the **Preferences** panel. The **Preferences** panel can be activated by selecting the **Preferences...** menu item located under the **Spamcaster** menu at the top of your display screen.



Spamcaster Preferences Window

Filter Using These Rules

Spamcaster has four distinct rule types:

- URLs
- IPs
- Strings
- Attachments

Each of these types has a corresponding checkbox in the **Preferences** panel. By checking or unchecking the checkboxes, you can configure whether or not Spamcaster will use rules of these types when filtering email messages.

Default Action for Junk Mail

When Spamcaster catches a piece of junk mail, there are three different actions it can take:

- **Move to Spam Folder** - move the message to a special folder named *Spam* which is created by Spamcaster.
- **Bounce** - send the message back to the sender
- **Delete** - permanently remove the message

By default, Spamcaster is configured to **Move to Spam Folder**.

The *Spam* folder can be found inside the QuickMail Server's *Filter* folder inside the *Message Store* folder. Messages are stored in the *Spam* folder in subfolders named for the date on which the spam was received (e.g. "2005-03-21").

As the mail server administrator, you should check the *Spam* subfolders regularly and make sure that no "good" email has accidentally been caught by Spamcaster. In order to help you do this, Spamcaster generates one HTML summary file per Spam subfolder named *index.html*. Below is an example of the summary file when viewed in a web browser:

Sender	Subject	Recipients	File
aed8@spammer.org	special promotion - get a 32" flat screen tv	greg@nrrabbit.com	MESS.390075.eml
admail.direct@unsubscribe.com	fwd: adv: important: this email address is circulating...	rabbit@nrrabbit.com	MESS.390076.eml
sh@klefgh.com	remote control helicopter - selling out fast	greg@nrrabbit.com	MESS.390077.eml
arcade@tupac.com	cheapest meds you'll find.	pat@nrrabbit.com	MESS.390079.eml
mailinge@actionmister.net	claim your 500 dollar shopping spree	pg@outspring.com	MESS.390083.eml

An example HTML summary file

If a "good" email has been caught, you need to determine which rule caught it. If you are a subscriber to Outspring's [Spamcaster Service](#), you can use the [Spamcaster Removal Request](#) form to let us know about the problem. Please check your own rule list before submitting a removal request. See the [User Rule List](#) section for more details.

Note: You may need to add a **White List** rule to correct the problem. See the [User Rule List](#) section for more details.

Once the problem has been corrected, drop the [MESS.xxxxxxxx.eml](#) file into the *Incoming* folder to force Spamcaster to process it again.

The *Incoming* folder can be found inside the QuickMail Server's *Filter* folder inside the *Message Store* folder. If the problem has been corrected, the message will not be caught by Spamcaster, and it will be delivered. If the problem has not been corrected, the message will be caught by Spamcaster again.

Note: In order to retrieve "good" mail caught by Spamcaster and deliver it to the intended recipient you need to drag the [MESS.xxxxxxxx.eml](#) file from the *Spam* folder to the *Accepted* folder. The QuickMail Server will process all the .eml files in the *Accepted* folder and deliver them.

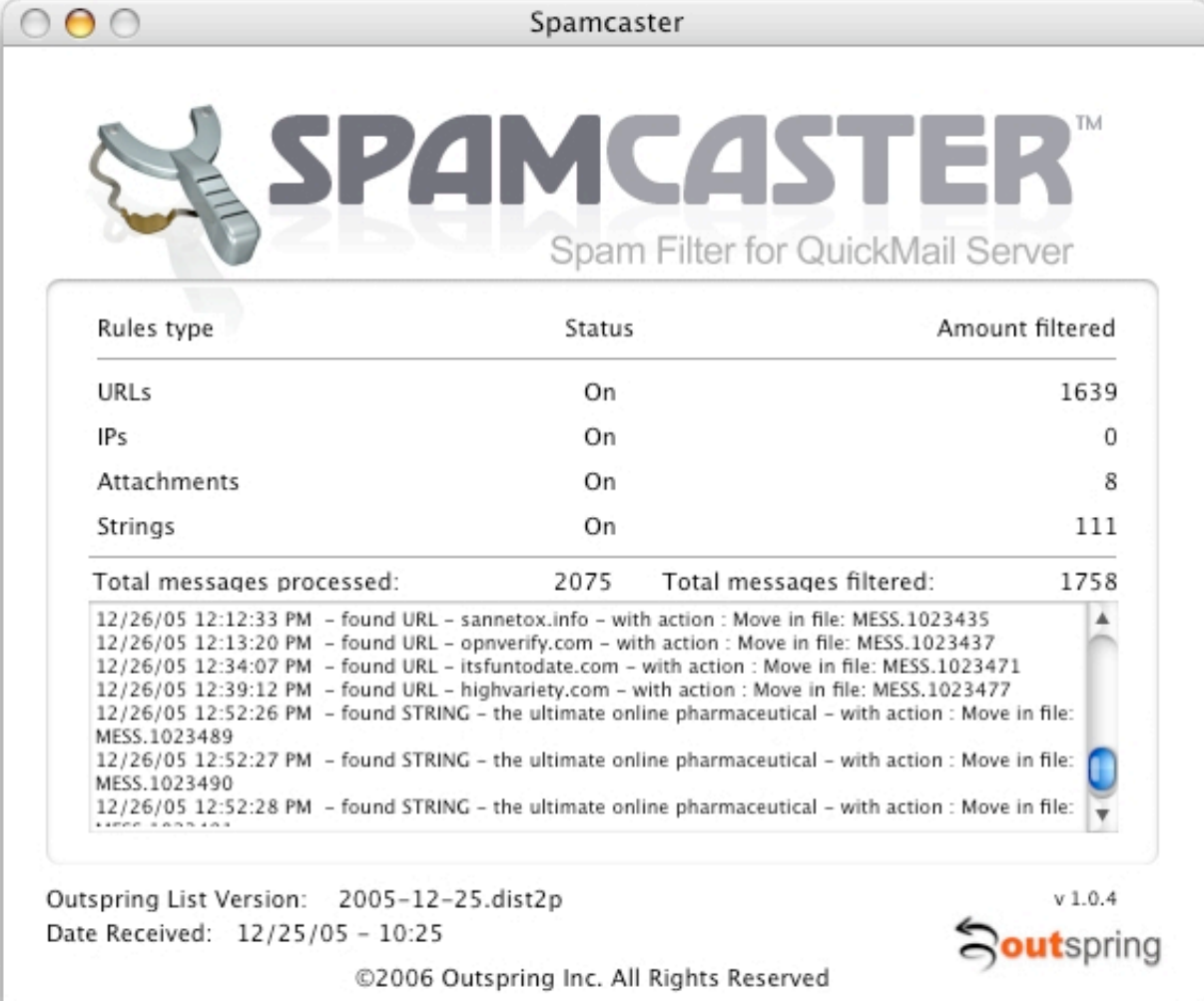
Spamcaster Log File

All of Spamcaster's actions are logged to a file named *Spamcaster.log*. This file can be found inside the *Spamcaster* folder inside the *QuickMail Server* folder. The log file is written in plain text format and can be viewed at any time using any text editor.

NOTE: Double clicking the *Spamcaster.log* file in Mac OS X will cause it to be opened with Mac OS X's console utility.

Spamcaster Main Window

Spamcaster's main window displays information pertaining to its operational status as well as statistics and log information. The top portion of the window shows which rules types are currently active as well as the number of messages filtered by those rules. The middle portion of the window shows the total number of messages scanned by Spamcaster as well as the total number of messages actually filtered. The bottom portion of the window displays the last several entries to the log file regarding any filtering actions performed by Spamcaster as well as other information regarding Spamcaster operation.



The screenshot shows the Spamcaster main window with the following content:

SPAMCASTER™
Spam Filter for QuickMail Server

Rules type	Status	Amount filtered
URLs	On	1639
IPs	On	0
Attachments	On	8
Strings	On	111


Total messages processed: 2075 Total messages filtered: 1758

Log entries:

- 12/26/05 12:12:33 PM - found URL - sannetox.info - with action : Move in file: MESS.1023435
- 12/26/05 12:13:20 PM - found URL - opnverify.com - with action : Move in file: MESS.1023437
- 12/26/05 12:34:07 PM - found URL - itsfuntodate.com - with action : Move in file: MESS.1023471
- 12/26/05 12:39:12 PM - found URL - highvariety.com - with action : Move in file: MESS.1023477
- 12/26/05 12:52:26 PM - found STRING - the ultimate online pharmaceutical - with action : Move in file: MESS.1023489
- 12/26/05 12:52:27 PM - found STRING - the ultimate online pharmaceutical - with action : Move in file: MESS.1023490
- 12/26/05 12:52:28 PM - found STRING - the ultimate online pharmaceutical - with action : Move in file: MESS.1023491

Outspring List Version: 2005-12-25.dist2p
Date Received: 12/25/05 - 10:25

©2006 Outspring Inc. All Rights Reserved v 1.0.4



Spamcaster Main Window

Spamcaster Rule Lists

Spamcaster filters messages based on rules contained in rule lists. Rule lists come from two different sources:

- [Outspring Spamcaster Subscription Service](http://help.outspring.com/spamcaster/en-us/mac/1.0.4/help.cgi)
- QuickMail Server administrator

Outspring Rule Lists

The Outspring Rule List is created and distributed by the [Spamcaster Subscription Service](#). The [Spamcaster Subscription Service](#) is a large rule based system that utilizes current spam data to circumvent spam without the need to create your own rules. Subscribers to this service will regularly receive updated lists which will be transmitted to their server by Outspring and automatically loaded by Spamcaster upon receipt. For more information on this valuable subscription service, visit <http://www.outspring.com/spamcaster.html>.

If you find that the Outspring Rule List that we are sending to Spamcaster Service subscribers is catching "good" email, please use the [Spamcaster Removal Request form](#) and we will quickly fix the problem.

You can find the Spamcaster Removal Request form at <http://www.outspring.com/spamcaster-removal-request.html>.

User Rule Lists

The user list is created by you, the Server Administrator. Using Spamcaster's simple rule syntax with the templates provided, you can create your own rule lists. Your rule list may be used either independently or in conjunction with rules you receive from Outspring in order to tailor the filtering functionality of Spamcaster to suit your specific needs.

Two template Rule List files are created the first time Spamcaster is loaded. These files can be found inside the **Lists** folder under the **Spamcaster** folder which lives inside the **Settings** folder under your **QuickMail Server** folder.

QuickMail Server:Settings:Spamcaster:Lists:

The two files are:

- [Whitelist.txt](#) - place rules here for mail that must always be received
- [Blacklist.txt](#) - place rules here for mail that you wish to be filtered out

NOTE: Inside these files are special markers and tags. It is possible to render the file unusable or produce unwanted results by changing these. We suggest that you avoid removing or altering these until you are sure you understand their purpose, detailed in the following sections.

Creating Rule Lists

The first time Spamcaster is launched, it creates two rule list templates which can be found inside the QuickMail Server folder in a folder named **Lists**. The template list named [Whitelist.txt](#) should be used only for rules for messages you wish to always accept in order to prevent them from ever being filtered out. The template list name [Blacklist.txt](#) should be used for only for rules for messages you do not wish to receive and should always be filtered out.

NOTE: Rules should be created with great care! It is possible to create rules that would hinder delivery of "good" mail.

```
#<SPAMCASTER>#####
#
#
```

```
#   Blacklist Rules Template   #
#                               #
#                               #
[Blacklist]#####

[URLs]
# Add URLs here:
onlinerx.com
hotsex.com
*.biz

[Strings]
# Add Strings here:
viagra
advertisement
free cialis samples

[IPs]
# Add IPs here:
66.206.7.193
216.187.77.201

[Parts]
# Add Attachments here:
.pif
.scr
```

Sample Blacklist.txt file

```
#<SPAMCASTER>#####
#                               #
#                               #
#   Whitelist Rules Template   #
#                               #
#                               #
[Whitelist]#####

[URLs]
# Add URLs here:
outspring.com<RULE_TAGS><DOMAIN>

[Strings]
# Add Strings here:
outspring

[IPs]
# Add IPs here:
209.204.135.151

[Parts]
# Add Attachments here:
# We have not included
# an attachment rule on purpose.
```

Sample Whitelist.txt file

Rule List Syntax

Rules must conform to a specific syntax in order to be correctly processed by Spamcaster so it can filter messages correctly. Different syntax is necessary for each of the different types of rule.

Comments may be added to rule files by starting a line with a pound sign (#). Any line which starts with this character will be ignored by Spamcaster.

Rules may be grouped according to action and type by using the following headings:

General action headings:

[Whitelist] - for whitelist rules

[Blacklist] - for blacklist rules

More specific action headings:

[Accept] - rules for message you want to always pass

[Reject] - rules for message you want to always bounce (return to sender)

[Challenge] - rules for messages to be reviewed before processing

[Delete] - rules under this setting are subject to the default action for Junk Mail as is set in Spamcaster's preferences. This is the same as using **[Blacklist]**.

Rule type headings:

[URLs] - URL-based rules

[IPs] - IP number-based rules

[Strings] - string-based rules

[Parts] - part or attachment-based rules

It is possible to intermix type and action headings throughout a file. Be aware, however, that a type or action will remain in effect for all rules following until a new rule is set.

Additional rule characteristics can be set by appending the end of the rule with a **<RULE_TAGS>** tag.

Examples:

- "I am A junk Mail filtering Rule"<RULE_TAGS><IS>
- scam.biz<RULE_TAGS><DOMAIN>

Instructions for the applicable <RULE_TAGS> for each rule type can be found in the following sections.

URLs

URLs rules are **case insensitive** string based rules and may be used as one of four different string types:

- 1) **is** - no other characters next to first or last characters in string
- 2) **starts with** - no other characters next to first character in string
- 3) **ends with** - no other characters next to last character in string
- 4) **contains** - general search for string anywhere in text of message URLs

Asterisks (*) are used to signify that the rule is one of the above types.

- 1) **is** - no asterisks
ramblinggrandparx.biz
- 2) **starts with** - asterisk at end of string
ramblinggrandparx.biz*
- 3) **ends with** - asterisk at beginning of string
*ramblinggrandparx.biz
- 4) **contains** - asterisk at both beginning and end of string
ramblinggrandparx.biz

Alternatively, you can use the <RULE_TAGS> tag:

- 1) **is** - ramblinggrandparx.biz
ramblinggrandparx.biz<RULE_TAGS><IS>
- 2) **starts with** - ramblinggrandparx.biz*
ramblinggrandparx.biz<RULE_TAGS><STARTSWITH>
- 3) **ends with** - *ramblinggrandparx.biz
ramblinggrandparx.biz<RULE_TAGS><ENDSWITH>
- 4) **contains** - *ramblinggrandparx.biz*
ramblinggrandparx.biz<RULE_TAGS><CONTAINS>

There are two different types of URL rules:

1) Domains

Domains are always located as exact matches with the type set to *is*, once the rule is established as a domain.

Domains must be specified using the following rule tag: <DOMAIN>

Examples:

- buysomething.biz<RULE_TAGS><DOMAIN>
- spamspamsam.com<RULE_TAGS><DOMAIN>
- sellyoujunk.info<RULE_TAGS><DOMAIN>

2) URL fragments

You can also write rules for specific URLs or URL fragments.

The following are valid URL fragment rules:

- www.drugsforcheap.com/buy/stuff/here/index.html
- *.com/buy/stuff/here/*
- */here/index.html
- drugsforcheap.com/buy/stuff/*
- spammer@spammer.biz
- *@spammer.biz

IMPORTANT: Do not include URL protocols schemes when creating URL or domain rules. These include:

- http://
- https://
- mailto:
- file://
- ftp://
- gopher://
- ldap://
- etc...

NOTE: Spamcaster URL rules will only apply to http, https and mailto URLs. For other URL types, you will need to use string rules.

If you wish to use asterisks as part of a rule, you must enclose the rule within quotation marks.

```
"www.evil.com/*./phish.cgi"
```

If you wish to use + as part of a rule, you must enclose the rule within quotation marks.

```
"www.evil.com/test.cgi?foo+bar"
```

IMPORTANT: URL rules must be encoded on disk.

In order to allow URLs with reserved, control, non-ASCII and unsafe characters, you must encode your URL rules following [RFC 1738 \(section 2.2\)](#).

Some examples:

- regions-secure.com/Reactivate%20Your%20Account%20Now
- www.foo.com?url=http%3a%2f%2fevilescape.com%2fevilescape.cgi

When Spamcaster loads URL rules from disk, it will always decode them in order to properly compare them to the URLs from messages which have also been decoded.

Strings (Phrases)

String rules use the same *search types* as described above: **is**, **contains**, **starts with**, and **ends with**.

Examples:

1) **is**

viagra

2) **starts with**

makemoneyfast*

3) **ends with**

*rolex

4) **contains**

nigerian

Alternatively, you can use the <RULE_TAGS> tag:

1) **is**

viagra<RULE_TAGS><IS>

2) **starts with**

makemoneyfast<RULE_TAGS><STARTSWITH>

3) **ends with**

rolex<RULE_TAGS><ENDSWITH>

4) **contains**

nigerian<RULE_TAGS><CONTAINS>

Strings rules may also be combinations of words or strings. Combinations are signified by separating words or phrases with plus signs (+).

Examples:

eat + at + joes

eat at joes + hand of doom

The words or phrases in a combination may exist anywhere within the message, including the headers. When combinations are used, the normal search types are ignored. A match occurs on a combination rule only if all the words or phrases in a combination are found within the body of a message.

If you wish to use a + sign as part of a rule without creating a combination, you must enclose the rule within quotation marks.

"eat + at + joes"

If you wish to use asterisks as part of a rule, you must enclose the rule within quotation marks. To match on the string "eat at joes*", you would do:

"eat at joes*"

However, the asterisks to signify the search type must lie outside of the quotation marks:

```
*"eat + at + joes"*
```

NOTE: All string rules are **case insensitive**.

IMPORTANT: String rules must be encoded on disk.

The Spamcaster rule syntax has six special characters. To write string rules that contain these characters, you must escape them.

- For **[**, use **%5B**. (This character is used for opening a rule type or action declaration.)
- For **]**, use **%5D**. (This character is used for closing rule type or action declaration.)
- For **#**, use **%23**. (This character is used for comments.)
- For **<**, use **%3C**. (This character is used for opening rule tags.)
- For **>**, use **%3E**. (This character is used for closing rule tags.)
- For **%**, use **%25**. (This character is used for escaping.)

Some examples:

- `thisis%5Bspam%5D`
- `100%25 Free Money`

IP Numbers and IP Ranges

IPs may be one of four types as search rules:

1) a single, fully qualified IP number:

```
192.168.0.1
```

2) a range using two IP numbers and a hyphen:

```
192.168.0.2-192.168.0.25
```

3) a range using a partially formed IP number with an asterisk:

```
192.168.0.*
```

```
192.168.*.*
```

```
192.*.*.*
```

NOTE: The * characters must be at the end of the range. The following ranges are invalid: `192.*.*.1`, `192.168.*.1`, `*.*.0.1`, etc.

NOTE: The following range is invalid: `*.*.*.*`

4) a range using a partially formed IP number with a mask:

```
192.168.0.1/24
```

NOTE: This example is equivalent to `192.168.0.*`, as the mask fixes the first 24 bits.

Parts and Attachments

Parts rules consist of the name of the attachment.

Examples:

- virus
- .pif
- iloveyou
- knownvirus.zip

NOTE: Attachment names are always searched as a **contains** rule, and are they **case insensitive**.

Words of Warning

Now that you've got your hands on this powerful new filtering software, how you use it is entirely up to you. As you've probably heard before, "With great power comes great responsibility!" Your mail user will count on you to filter out as much junk mail as possible while still allowing the important items to get through. Using Spamcaster is quite easy. However, should you experience difficulty we are always ready to lend a helping hand.

TECH SUPPORT

How to contact Outspring

If you have questions about Spamcaster that are not addressed in this manual, please see our support page at <http://www.outspring.com/support.html> for how to contact Outspring.

Copyright ©2004 - 2006 [Outspring Inc.](#) All Rights Reserved.